

**GENERAL NOTES:**

1. THESE GENERIC DETAILS ARE TO CONFORM TO 'In-Situ Performance Evaluation of Exterior Insulation Basement System - Spray Polyurethane Foam', Swinton et. al., NRC, Internal Report No. 820, 2000, FOR THE APPLICATION OF MEDIUM DENSITY POLYURETHANE SPRAY FOAM FOR BELOW GRADE APPLICATIONS SUCH AS THERMAL RESISTANCE, PROTECTION FROM MOISTURE IN THE GROUND, AND PROTECTION FROM ADHERING SOILS DUE TO FROST.
2. ALL MATERIALS AND DIMENSIONS ARE GENERIC UNLESS STATED IN THE DETAILS TO MEET THE FUNCTIONAL REQUIREMENTS IN THE FOLLOWING TABLE.
3. THESE GENERIC DETAILS ARE TO SHOW HOW WALLTITE® SPRAY FOAM INSULATION CAN MEET THE FUNCTIONAL REQUIREMENTS OF SECTION 5.3, 5.4, 5.5, 5.7.3, 9.13.2, 9.13.4, 9.25.2 , 9.25.3 and 9.25.4 OF THE 2015 NBC AS LISTED IN THE FOLLOWING TABLE.

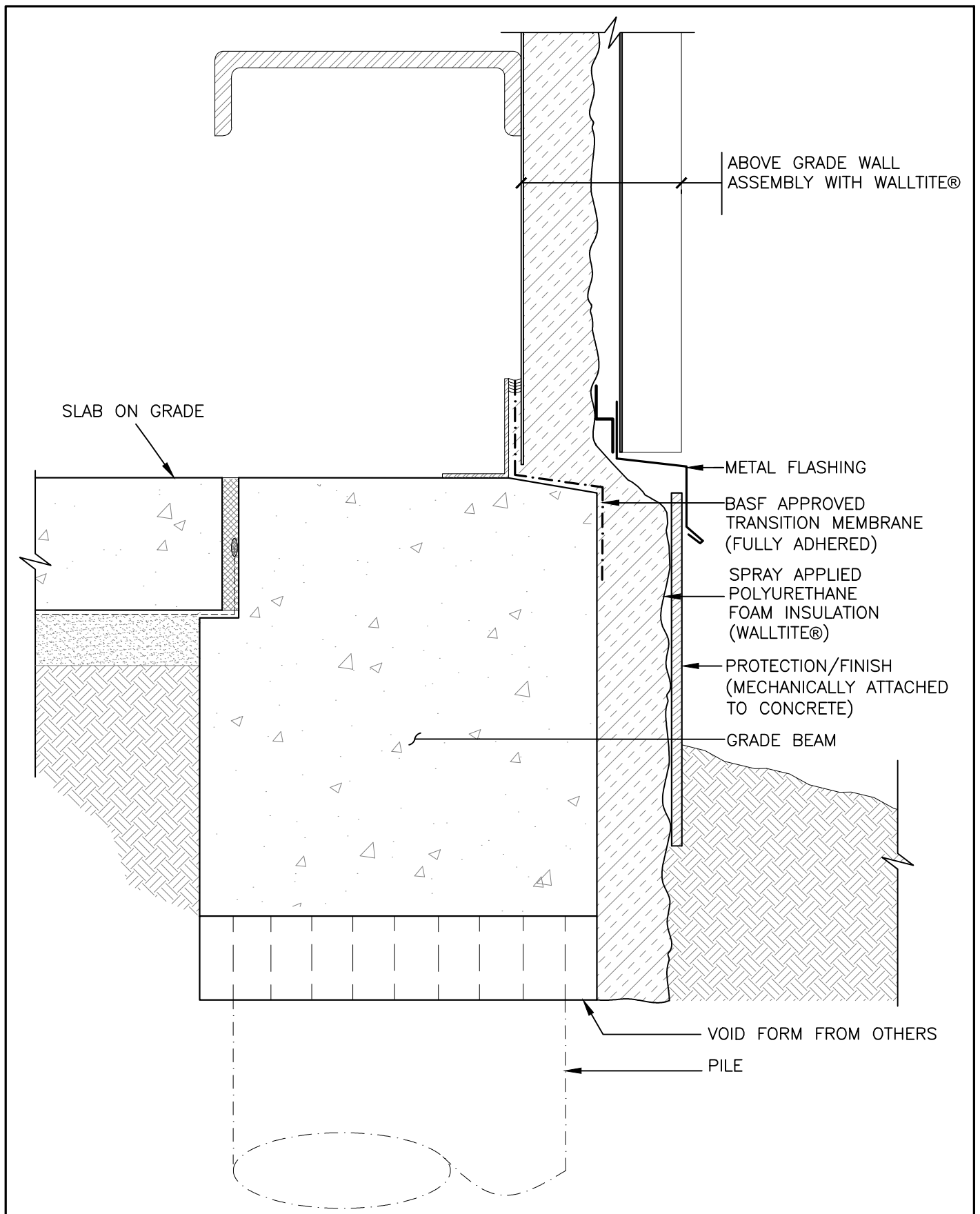
Materials Providing Functional Requirement				
Envelope Element	Thermal Resistance (5.3, 9.25.2)	Protection from Moisture in the Ground (5.7.3, 9.13.2 )	Vapor Barrier (5.5, 9.25.4)	Air Barrier System and Soil Gas Control (5.4, 9.13.4, 9.25.3)
Below Grade Beams	WALLTITE®	WALLTITE®	WALLTITE®	N/A
Foundation Walls	WALLTITE®	WALLTITE®	WALLTITE®	N/A
Floor Slabs	WALLTITE®	WALLTITE®	WALLTITE®	WALLTITE® & SEALANT

\*The application of spray applied polyurethane foam insulation to the underside of floor slabs should not be used in a structural capacity without the review and analysis of a design professional.

**GENERAL NOTES**

BASF Canada  
[www.walltite.com](http://www.walltite.com)  
1-866-474-3538

Drawing No.: A1.100	Scale: 3"=1'-0"	Project No.: 1113608.00	Date: MAY 14	Design: PR	Drawn: LA	Reviewed: PR
---------------------	-----------------	-------------------------	--------------	------------	-----------	--------------

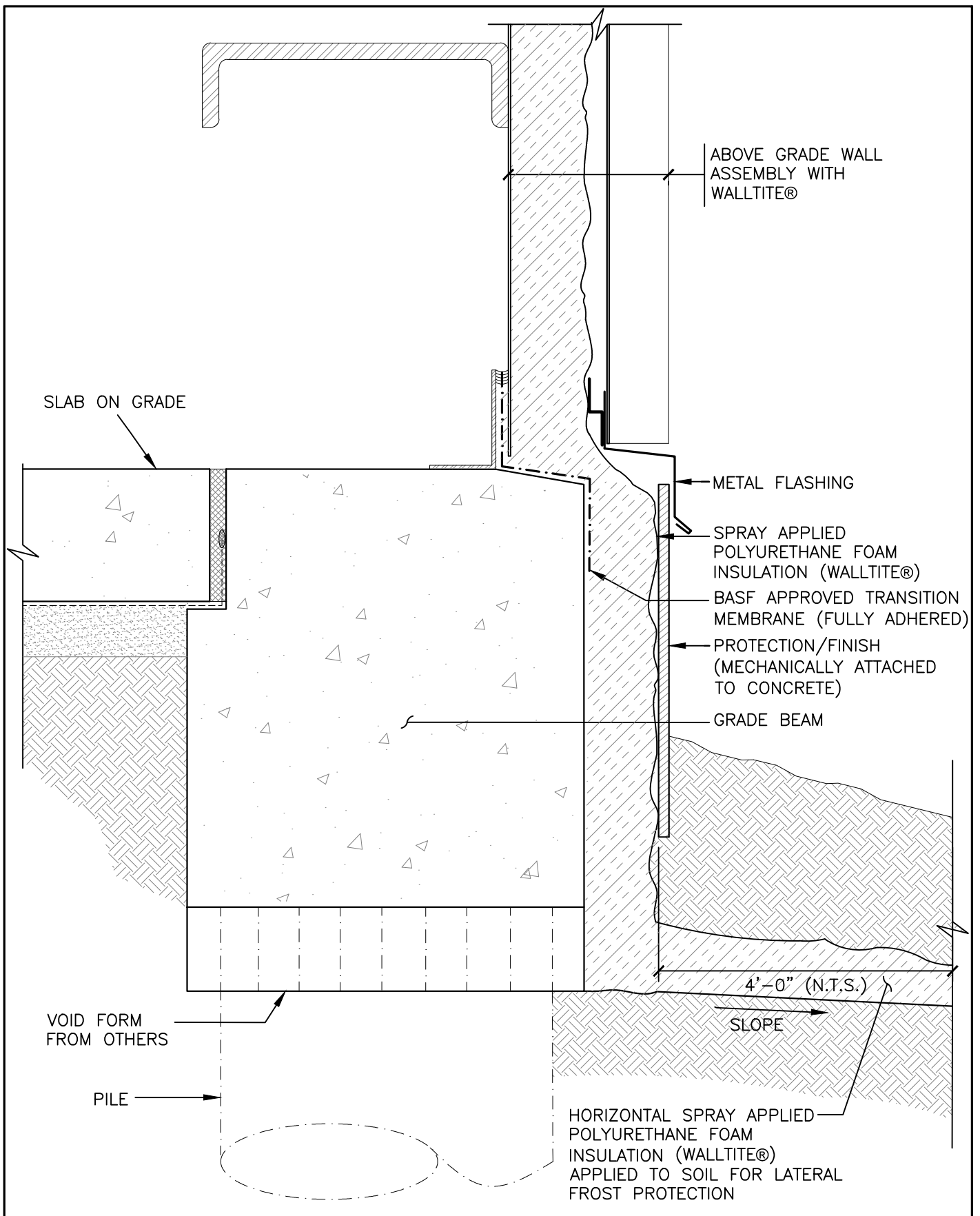


BELOW GRADE BEAM WITH  
EXTERIOR INSULATION AT VERTICAL FACE



BASF Canada  
**WALLTITE®** [www.walltite.com](http://www.walltite.com)  
1-866-474-3538

Drawing No.: A5.101	Scale: 3"=1'-0"	Project No.: 1113608.00	Date: MAY 14	Design: PR	Drawn: LA	Reviewed: PR
---------------------	-----------------	-------------------------	--------------	------------	-----------	--------------

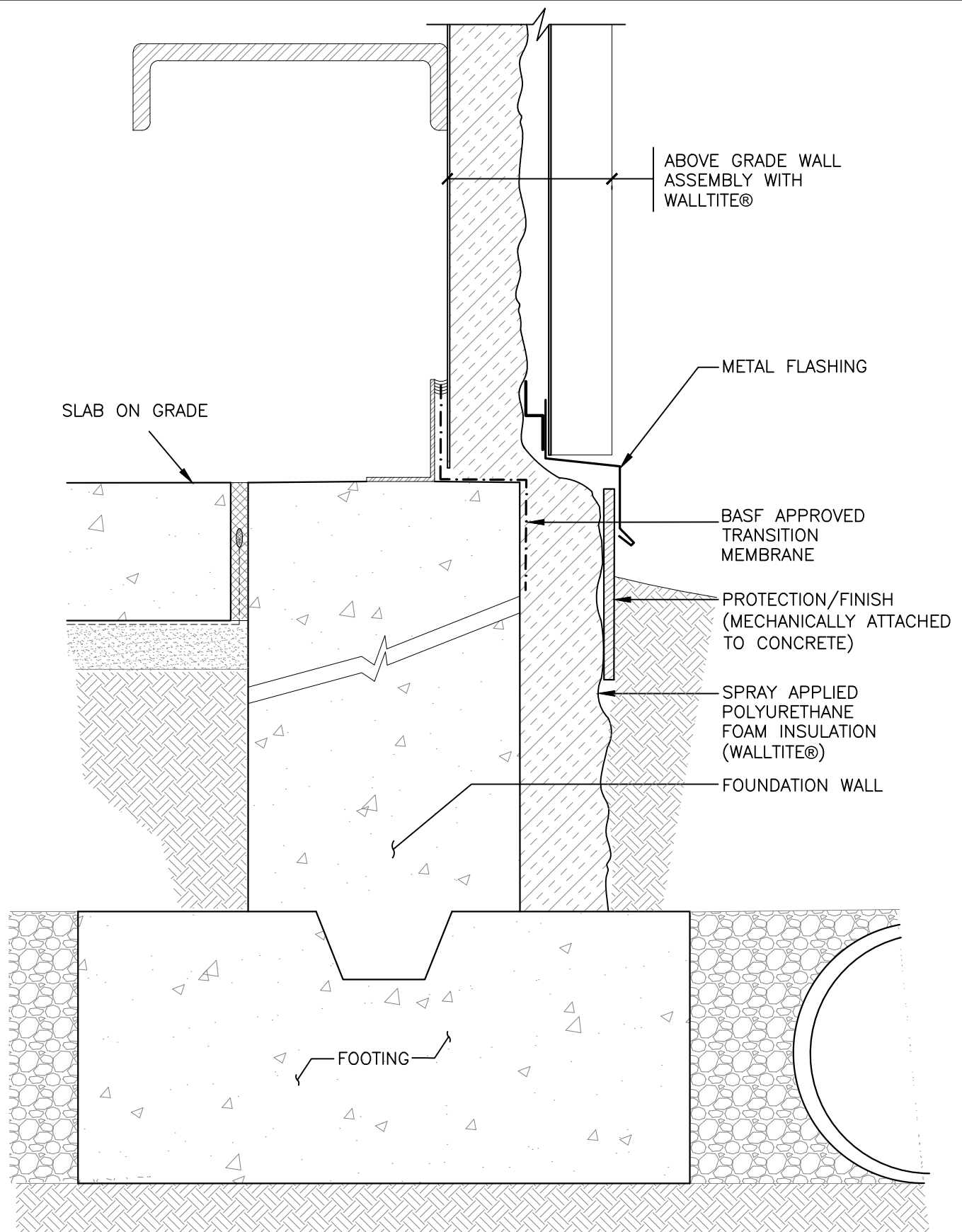


**BELOW GRADE BEAM WITH EXTERIOR  
INSULATION AT VERTICAL FACE & EXTENSION**



**BASF Canada**  
**WALLTITE®** [www.walltite.com](http://www.walltite.com)  
 1-866-474-3538

Drawing No.: A5.102	Scale: 3"=1'-0"	Project No.: 1113608.00	Date: MAY 14	Design: PR	Drawn: LA	Reviewed: PR
---------------------	-----------------	-------------------------	--------------	------------	-----------	--------------



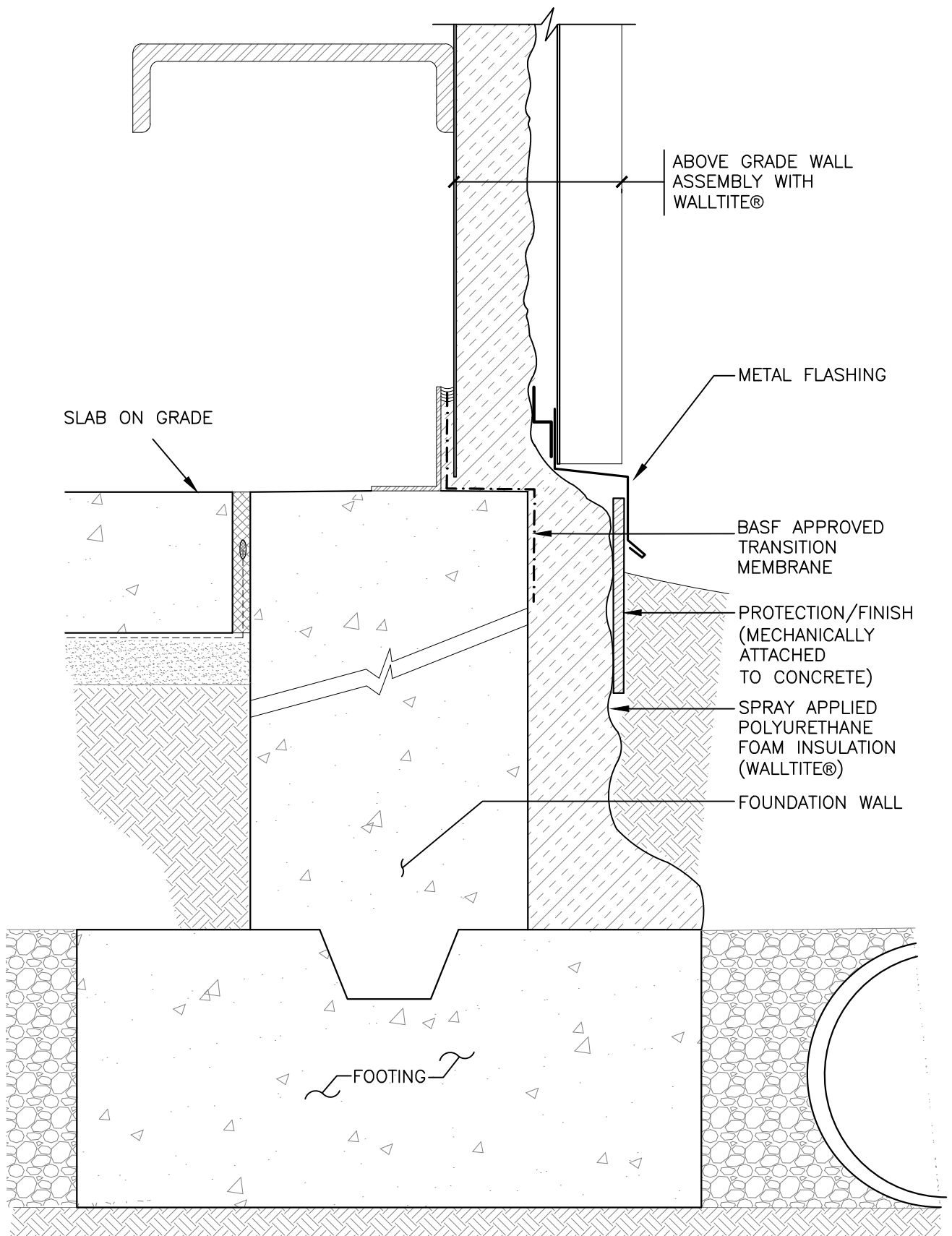
# EXTERIOR INSULATED FOUNDATION WALLS



**WALLTITE**

BASF Canada  
[www.walltite.com](http://www.walltite.com)  
 1-866-474-3538

Drawing No.: A5.103	Scale: 3"=1'-0"	Project No.: 1113608.00	Date: MAY 14	Design: PR	Drawn: LA	Reviewed: PR
---------------------	-----------------	-------------------------	--------------	------------	-----------	--------------

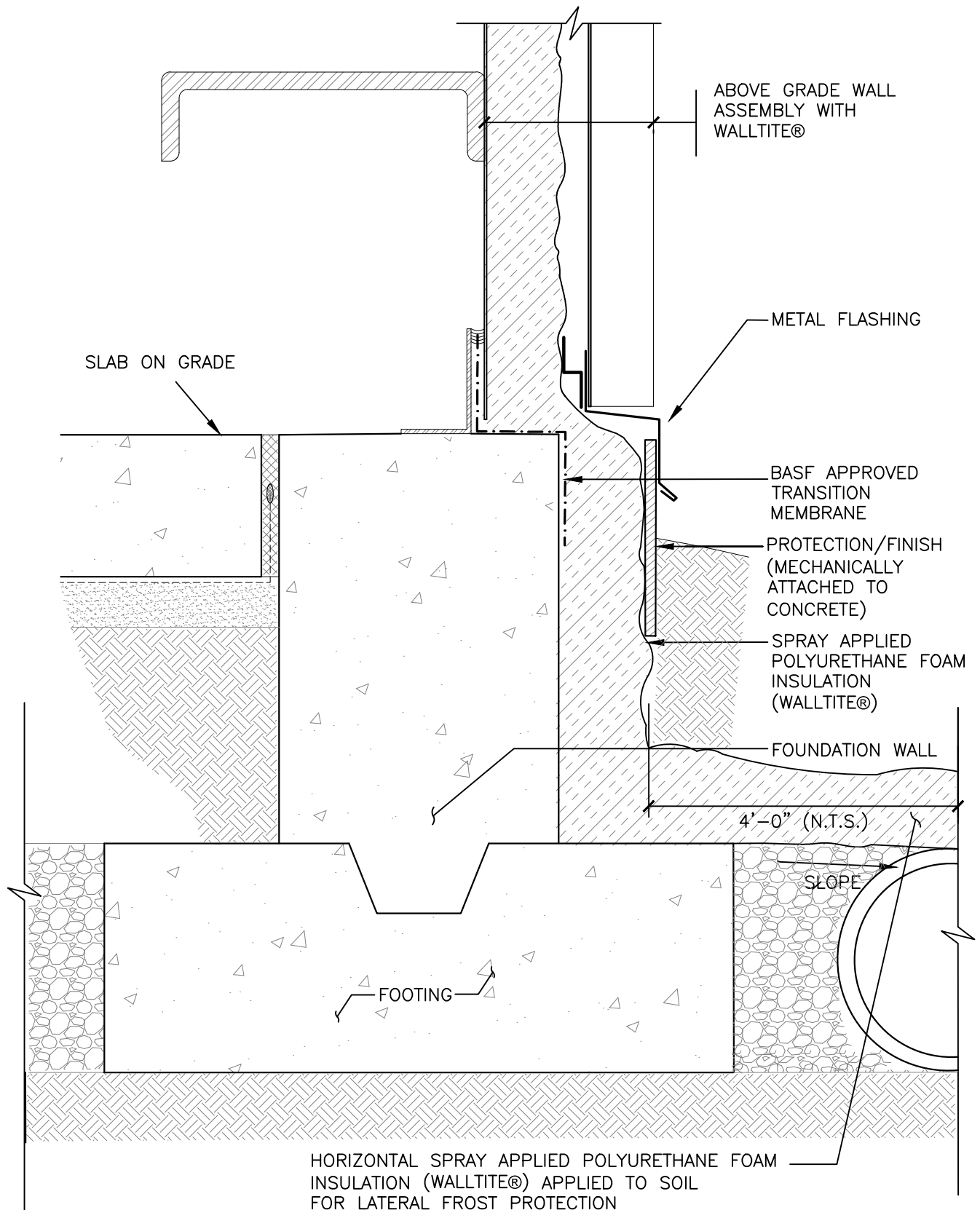


# EXTERIOR INSULATED FOUNDATION WALL AND TOP OF FOOTING



**BASF Canada**  
[www.walltite.com](http://www.walltite.com)  
 1-866-474-3538

Drawing No.: A5.104	Scale: 3"=1'-0"	Project No.: 1113608.00	Date: MAY 14	Design: PR	Drawn: LA	Reviewed: PR
---------------------	-----------------	-------------------------	--------------	------------	-----------	--------------



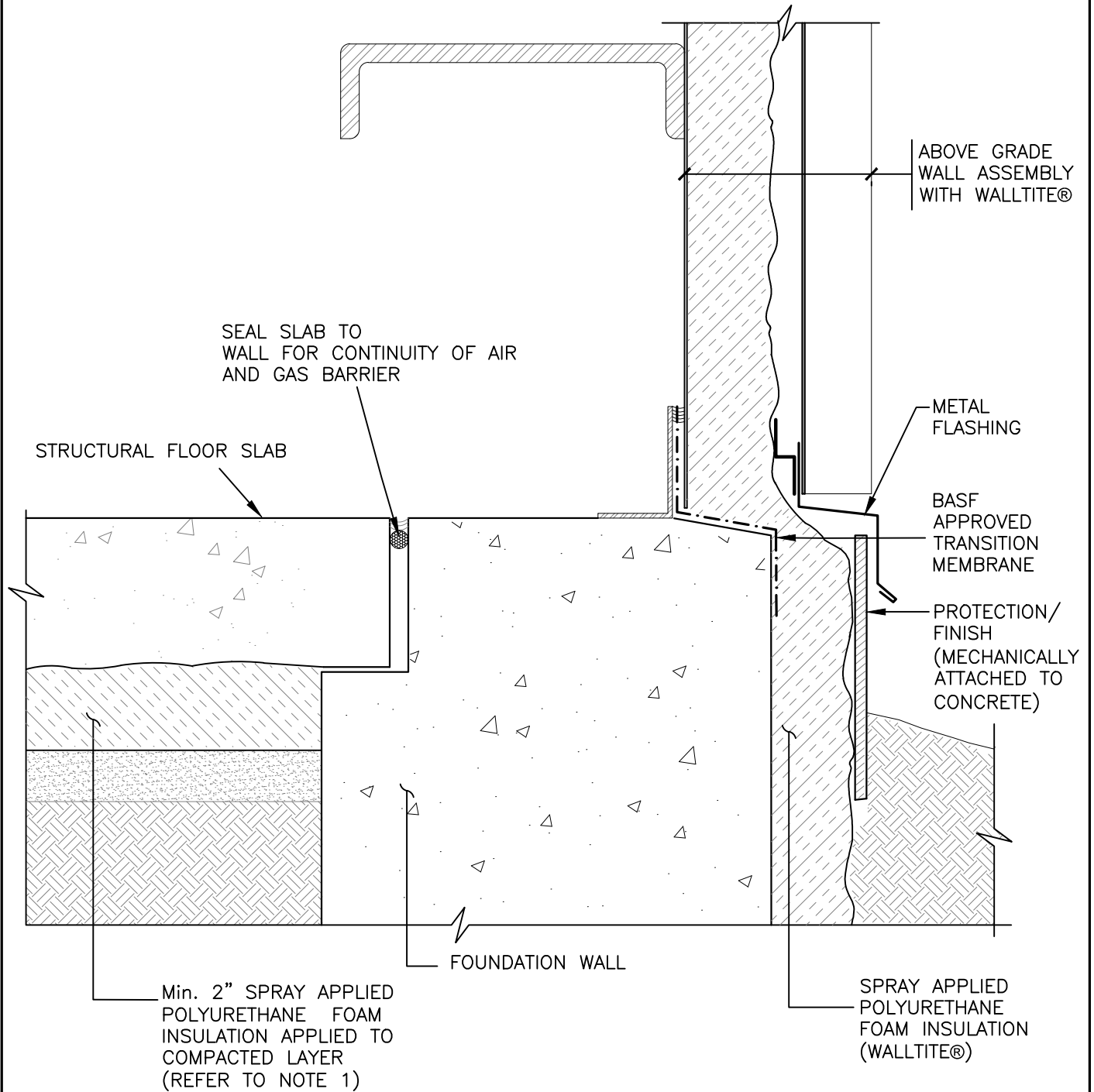
# EXTERIOR INSULATED SHALLOW FOUNDATION WALL AND EXTENSION



**WALLTITE**

BASF Canada  
[www.walltite.com](http://www.walltite.com)  
 1-866-474-3538

Drawing No.: A5.105	Scale: 3"=1'-0"	Project No.: 1113608.00	Date: MAY 14	Design: PR	Drawn: LA	Reviewed: PR
---------------------	-----------------	-------------------------	--------------	------------	-----------	--------------



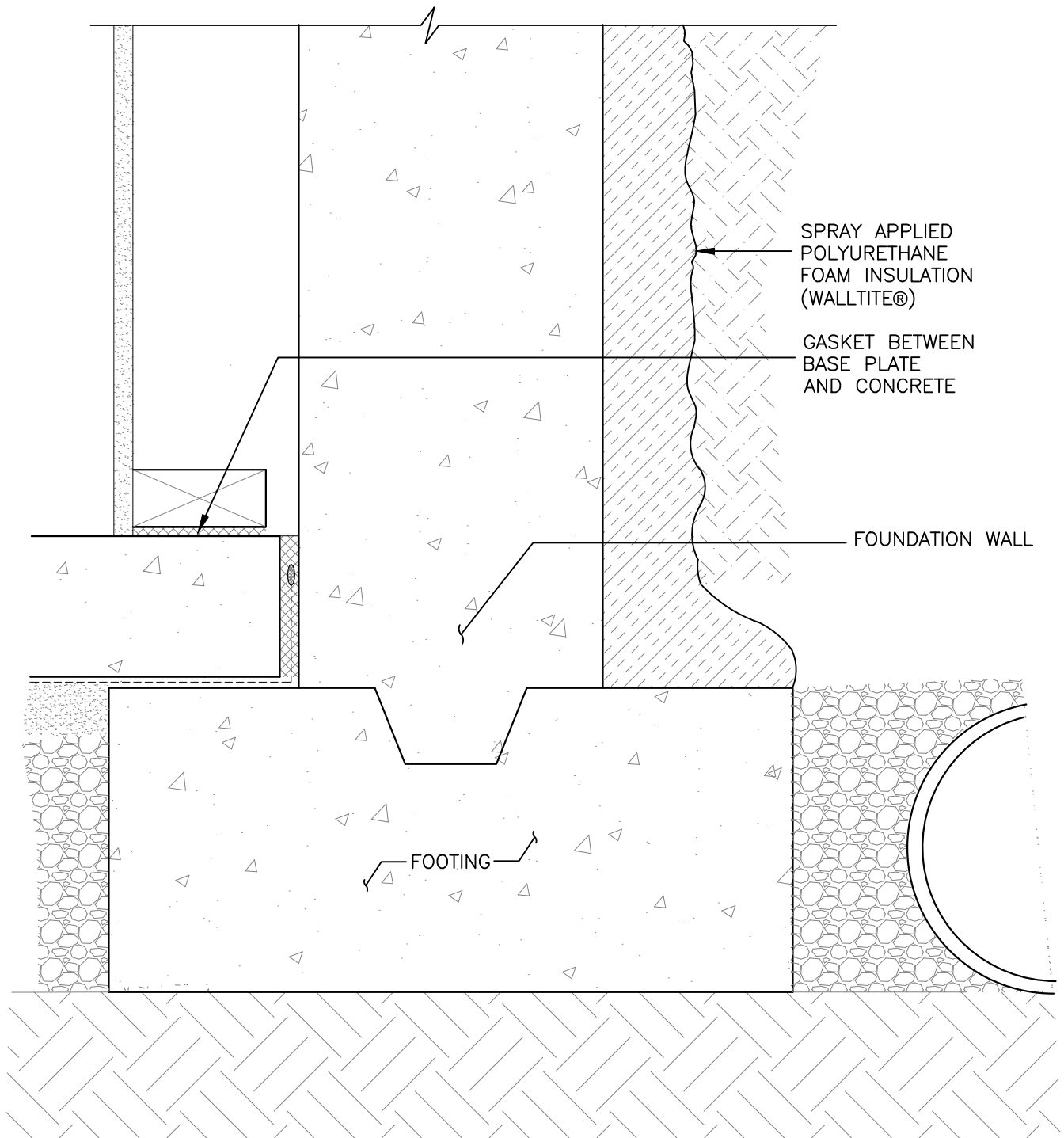
**NOTE 1:** THE APPLICATION OF SPRAY APPLIED POLYURETHANE FOAM INSULATION TO THE UNDERSIDE OF FLOOR SLABS SHOULD NOT BE USED IN A STRUCTURAL CAPACITY WITHOUT THE REVIEW AND ANALYSIS OF A DESIGN PROFESSIONAL

## INSULATED STRUCTURAL FLOOR SLAB



**BASF Canada**  
**WALLTITE®** [www.walltite.com](http://www.walltite.com)  
 1-866-474-3538

Drawing No.: A5.106	Scale: 3"=1'-0"	Project No.: 1113608.00	Date: MAY 14	Design: PR	Drawn: LA	Reviewed: PR
---------------------	-----------------	-------------------------	--------------	------------	-----------	--------------



EXTERIOR INSULATED FOUNDATION WALL  
- BASEMENT



BASF Canada  
**WALLTITE®** [www.walltite.com](http://www.walltite.com)  
1-866-474-3538

Drawing No.: A5.107	Scale: 3"=1'-0"	Project No.: 1113608.00	Date: MAY 14	Design: PR	Drawn: LA	Reviewed: PR
------------------------	--------------------	----------------------------	-----------------	---------------	--------------	-----------------



SPRAY APPLIED  
POLYURETHANE  
FOAM INSULATION  
(WALLTITE®)

FOUNDATION WALL

PROVIDE SPRAY APPLIED  
POLYURETHANE FOAM  
INSULATION (WALLTITE®)  
BETWEEN SLAB AND  
FOUNDATION AS  
REQUIRED BY AUTHORITY  
HAVING JURISDICTION

GASKET BETWEEN BASE  
PLATE AND CONCRETE

Min. 2" SPRAY APPLIED  
POLYURETHANE FOAM  
INSULATION (WALLTITE®)  
APPLIED TO COMPACTED  
LAYER (REFER TO NOTE 1)

FOOTING

NOTE 1: THE APPLICATION OF SPRAY APPLIED POLYURETHANE FOAM INSULATION TO THE UNDERSIDE OF FLOOR SLABS SHOULD NOT BE USED IN A STRUCTURAL CAPACITY WITHOUT THE REVIEW AND ANALYSIS OF A DESIGN PROFESSIONAL

## INSULATED FLOOR SLAB - BASEMENT



**WALLTITE®**

BASF Canada  
[www.walltite.com](http://www.walltite.com)  
1-866-474-3538

Drawing No.: A5.108	Scale: 3"=1'-0"	Project No.: 1113608.00	Date: MAY 14	Design: PR	Drawn: LA	Reviewed: PR
---------------------	-----------------	-------------------------	--------------	------------	-----------	--------------

2" SPRAY APPLIED  
POLYURETHANE FOAM  
INSULATION(WALLTITE®)

FOUNDATION WALL

PAINTED FINISH  
ON ½" GWB

PROVIDE SPRAY APPLIED  
POLYURETHANE FOAM  
INSULATION(WALLTITE®)  
BETWEEN SLAB AND  
FOUNDATION AS REQUIRED  
BY AUTHORITY HAVING  
JURISDICTION

GASKET BETWEEN BASE  
PLATE AND CONCRETE

Min. 2" SPRAY APPLIED  
POLYURETHANE FOAM  
INSULATION (WALLTITE®)  
APPLIED TO COMPACTED  
LAYER (REFER TO NOTE 1)

BITUMINOUS  
DAMPROOFING

FOOTING BELOW  
FROST LINE

FOOTING

**NOTE 1:** THE APPLICATION OF SPRAY APPLIED POLYURETHANE FOAM INSULATION TO THE UNDERSIDE OF FLOOR SLABS SHOULD NOT BE USED IN A STRUCTURAL CAPACITY WITHOUT THE REVIEW AND ANALYSIS OF A DESIGN PROFESSIONAL

## FOUNDATION WALL AT FOOTING



**WALLTITE®**

BASF Canada  
[www.walltite.com](http://www.walltite.com)  
1-866-474-3538

Drawing No.: A5.109	Scale: 3"=1'-0"	Project No.: 1113608.00	Date: MAY 14	Design: PR	Drawn: LA	Reviewed: PR
------------------------	--------------------	----------------------------	-----------------	---------------	--------------	-----------------